

cutting forming  
machine for  
transistors  
in tube

# TP TO-CF

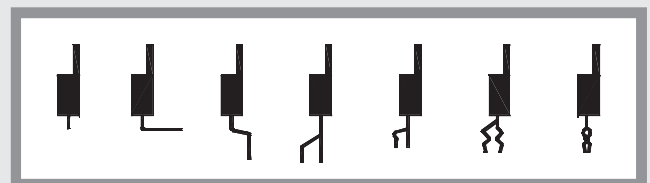
macchina  
taglia forma  
transistors da  
stecca

TP/TO-CF 13.OL01 = 110v  
TP/TO-CF 13.OL02 = 220v  
Without dies - senza matrici

ELECTRICAL POWER = 220V -110V - 50HZ 50VA  
LENGTH = 55 CM  
WIDTH = 40 CM  
HEIGHT = 65 CM  
DIMENSIONS = 70X50X80  
VOLUME = .28M<sup>3</sup>  
MACHINE WEIGHT = 40 KG  
GROSS WEIGHT = 44 KG  
CRATED WEIGHT = 55 KG

ALIMENTAZIONE = 220V - 50HZ - 50 VA  
LUNGH. = 55 CM  
LARGH. = 40 CM  
ALT. = 65 CM  
IMBALLO = 70X50X80  
VOLUME = .28M<sup>3</sup>  
PESO MACCHINA = 40 KG  
PESO LORDO = 44 KG  
CASSA DI LEGNO = 55 KG

Speed = 3000 p/h  
Produzione 3000 p/h



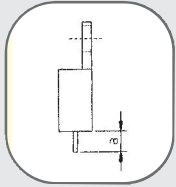
TP/TO-CF is an automatic machine designed to cut and form transistors in tube (TO-220, TO-218, TO-126). All strokes are controlled by a PLC. The complete operation is fully automatic and each form needs a dedicated die. Two wire holders lock the leads before the cutting forming operations. Special forms to customers specifications are available upon request.

La TP/TO-CF è una macchina automatica utilizzata per eseguire il taglio e la forma di transistors in stecca (TO-220, TO-218, TO-216). Le lavorazioni vengono impostate e controllate tramite un PLC. L'operazione è completamente automatica e ciascuna forma richiede matrici dedicate. Due premi filo bloccano i reofori prima della fase di taglio e preformatura. Forme speciali possono essere realizzate su richiesta e specifiche del cliente.

# standard die assemblies for TP/TO-CF machine

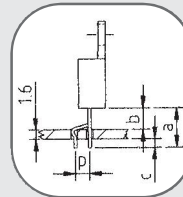
# gruppi matrici standard per la macchina TP/TO-CF

131000  
STRAIGHT CUT  
SOLO TAGLIO



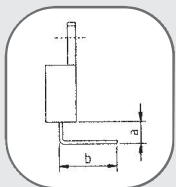
	MM			IN		
	min	max	fix	min	max	fix
<b>a</b>	3	13		.118	.511	

132200  
CENTER LEAD SPREAD AND LOCK  
REOFORO CENTRALE SPOSTATO  
E ANSA A BLOCCAGGIO



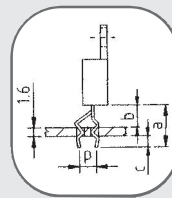
	MM			IN		
	min	max	fix	min	max	fix
<b>a</b>	7	13		.275	.511	
<b>b</b>	4	10		.157	.393	
<b>c</b>			1,4			.055
<b>p*</b>			2,54			.1

131300  
90° BENDING  
PIEGA A 90°



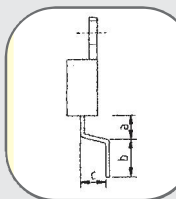
	MM			IN		
	min	max	fix	min	max	fix
<b>a</b>	3	8		.118	.314	
<b>b*</b>			6			.236

132300  
CENTER LEAD SPREAD/3 LEAD LOCK  
REOFORO CENTRALE SPOSTATO  
DOPPIA ANSA SU TRE REOFORI



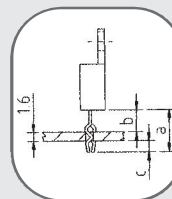
	MM			IN		
	min	max	fix	min	max	fix
<b>a</b>	7	13		.275	.511	
<b>b</b>	4	10		.157	.393	
<b>c</b>			1,4			.055
<b>p*</b>			2,54			.1

131400  
SURFACE MOUNTING  
MONTAGGIO IN SUPERFICIE



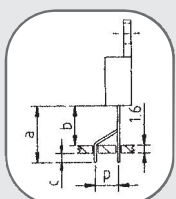
	MM			IN		
	min	max	fix	min	max	fix
<b>a</b>	2,5	8		.098	.314	
<b>b*</b>			2			.078
<b>c*</b>			2,5			.098

132400  
DOUBLE KINK ON THREE LEAD - IN LINE  
DOPPIA ANSA SU TRE REOFORI IN LINEA



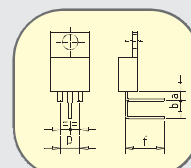
	MM			IN		
	min	max	fix	min	max	fix
<b>a</b>	6	11		.236	.433	
<b>b</b>	3	8		.118	.314	
<b>c</b>			1,4			.055

132100  
CENTRAL LEAD SPREAD AND CUT  
REOFORO CENTRALE SPOSTATO E TAGLIO



	MM			IN		
	min	max	fix	min	max	fix
<b>a</b>	7	13		.275	.511	
<b>b</b>	4	10		.157	.393	
<b>c</b>			1,4			.055
<b>p*</b>			2,54			.1

133100  
90° BENDING CENTER LEAD OFF SET  
PIEGA 90° REOFORO CENTRALE SPOSTATO



	MM			IN		
	min	max	fix	min	max	fix
<b>a</b>	3	5		.118	.196	
<b>b*</b>			5			.196
<b>f*</b>			6			.216
<b>p</b>			5,08			.2

\*quote to be specified upon order

\*quota da comunicare all'ordine

forms realised with  
special die assemblies  
for TP/TO-CF machine

forme realizzate con  
matrici speciali per la  
macchina TP/TO-CF

